

Lichen – a kerchief and bracelet

Linen/cotton blends have a slightly crisp feeling that makes me think of lichen – strong and delicate at the same time. Many varieties reach outward with the branching effect I've used here, and incorporate hollow circles. The kerchief is natural knit for summer and a pretty way to hold back your hair or sunblock an open collar on a hot day.

Materials

Americo Linen Tanguis [50% tanguis cotton, 50% linen; 218 yd/199 m per 100g]; color I158; 1 skein

1 set US #6/4mm straight needles (or size to obtain gauge)

1 tapestry needle

2-3 clear plastic buttons, 5/8" wide

Optional, for bracelet only:

3-4 clear plastic buttons, small sizes

Gauge

20 sts/24 rows = 4" in stockinette stitch

Yarn substitution:

The designs look best in a solid or semisolid yarn. Kerchief requires 70 yd/65 m of yarn; matching bracelet requires 20 yd/19m for largest size.

Abbreviations

K: knit

K2tog: knit two together

LT: left twist (drop next st on left needle to front of work, K1, pick up dropped st and K)

P: purl

RT: right twist (skip next st on left needle, k 2nd st in front of skipped st, then K skipped st)

sl: slip stitch purlwise (with yarn held to the wrong side of the work)

sl2tog, K1, pss: slip two together, knit one, pass slipped sts over (slip two sts knitwise as though they were one, K1, pass slipped sts over knit st)

ssk: slip slip knit (slip each of two stitches knitwise, then knit these two sts together)

st: stitch

yo: yarn over

Kerchief Directions

Cast on 117 sts

Section One

Setup Row: [P1, K1] 14 times, [K1, P9] 6 times, K1, [P1, K1] 14 times

Row 1: Ssk, [K1, P1] 13 times, [P1, *K2tog, yo, K1; repeat from * twice more] 3 times, P1, [*K1, yo, ssk; repeat from * twice more, P1] 3 times, [K1, P1] to last 2 sts, K2tog – 115 sts

Row 2: [K1,P1] 13 times, K1, [K1, P9] 6 times, K1, [P1, K1] 13 times, P1

Row 3: Ssk, [P1, K1] 12 times, P1, [P1, * K1, yo, ssk; repeat from * twice more] 3 times, P1, [*K2tog, yo, K1; repeat from * twice more, P1] 3 times, [K1, P1] to last 3 sts, K1, K2tog – 113 sts

Row 4: [P1, K1] 13 times [K1, P9] 6 times, K1, [P1, K1] 13 times

Row 5: Cast off 26 sts, [*K2tog, yo, K1; repeat from * twice more, P1] 3 times, [*K1, yo, ssk; repeat from * twice more, P1] 3 times, [K1, P1] to last 2 sts, K2tog – 86 sts

Row 6: Cast off 25 sts, [P9, K1] 5 times, P9, sl1 – 61 sts

Section Two

(charted instructions are provided also, from this point onward)

Row 1: K3, K2tog, yo, K2, ssk, K10, LT, K6, RT, K2, RT, [K7, RT] twice, K1, K2tog, K2, yo, ssk, K3 – 59 sts

Row 2: Sl1, P9, sl1, [P8, sl1] twice, P3, sl1, P6, sl1, P to last st, sl1

Row 3: K2, K2tog, yo, K3, ssk, K4, LT, K2, RT, LT, K4, RT, K2, RT, K7, RT, K3, RT, K2, RT, K1, K2tog, K3, yo, ssk, K2 – 57 sts

Row 4: Sl1, P9, sl1, P3, sl1, P4, sl1, P8, sl1, P3, sl1, P4, sl1, [P2, sl1] twice, P to last st, sl1

Row 5: K1, K2tog, yo, K4, ssk, K4, LT, RT, K2, LT, [K2, RT] twice, K1, LT, K4, RT, K3, RT, K2, RT, K1, K2tog, K4, yo, ssk, K1 – 55 sts

Row 6: Sl1, P9, sl1, P3, sl1, [P4, sl1] twice, [P3, sl1] twice, P2, sl1, P4, sl2, P to last st, sl1

Row 7: K2tog, yo, K5, ssk, K4, LT, K2, RT, LT, RT, K2, RT, K3, LT, K2, RT, K3, RT, K2, RT, K1, K2tog, K5, yo, ssk – 53 sts

Row 8: Sl1, P9, sl1, P3, sl1, P4, sl1, P2, sl1, P5, sl1, P3, sl2, [P2, sl1] twice, P to last st, sl1



Row 9: K3, K2tog, yo, K2, ssk, K2, RT, LT, RT, K2, LT, K2, RT, LT, K3, LT, RT, K3, RT, K2, RT, K1, K2tog, K2, yo, ssk, K3 – 51 sts

Row 10: S11, P9, sl1, P3, sl1, P4, sl2, P4, sl1, [P2, sl1] twice, P4, sl2, P2, sl1, P to last st, sl1

Row 11: K2, K2tog, yo, K3, ssk, RT, K2, LT, K4, LT, RT, K2, LT, [K3, RT] twice, LT, RT, K1, K2tog, K3, yo, ssk, K2 – 49 sts

Row 12: S11, P9, sl2, P2, sl1, P4, sl1, P3, sl1, P4, sl2, P5, sl1, P4, sl1, P to last st, sl1

Row 13: K1, K2tog, yo, K4, ssk, K2, RT, LT, K4, LT, K4, ssk, yo, K1, RT, K3, RT, K2, LT, K1, K2tog, K4, yo, ssk, K1 – 47 sts

Row 14: S11, P8, sl1, [P4, sl1] twice, P2, sl1, P4, sl1, P5, sl1, P2, sl1, P to last st, sl1

Row 15: K2tog, yo, K5, ssk, K4, LT, K2, K2tog, yo, LT, K1, RT, K3, LT, K2, RT, K5, K2tog, K5, yo, ssk – 45 sts

Row 16: S11, P13, sl1, P2, sl1, P5, sl1, P1, sl1, [P2, sl1] twice, P to last st, sl1

Row 17: K3, K2tog, yo, K2, ssk, K2, RT, LT, RT, K3, RT, K2tog, yo, K3, LT, RT, K2, RT, K1, K2tog, K2, yo, ssk, K3 – 43 sts

Row 18: S11, P9, sl1, P3, sl2, P6, sl2, P4, sl2, P2, sl1, P to last st, sl1

Row 19: K2, K2tog, yo, K3, ssk, RT, K2, LT, K3, RT, K1, LT, K4, LT, K2, RT, K1, K2tog, K3, yo, ssk, K2 – 41 sts

Row 20: S11, P9, sl1, P2, sl1, P5, sl1, [P3, sl1] twice, P4, sl1, P to last st, sl1

Row 21: K1, K2tog, yo, K4, ssk, K2, RT, LT, K1, RT, K2tog, yo, K1, LT, K4, LT, RT, K1, K2tog, K4, yo, ssk, K1 – 39 sts

Row 22: S11, P9, sl2, P5, sl1, P3, sl1, [P1, sl1] twice, P2, sl1, P to last st, sl1

Row 23: K2tog, yo, K5, ssk, RT, K2, LT, K1, RT, K3, LT, K4, LT, K1, K2tog, K5, yo, ssk – 37 sts

Row 24: S11, P8, sl1, [P5, sl1] twice, P1, sl1, P4, sl1, P to last st, sl1

Row 25: K3, K2tog, yo, K2, ssk, K5, RT, K5, LT, K2, RT, K1, K2tog, K2, yo, ssk, K3 – 35 sts

Row 26: S11, P9, sl1, P2, sl1, P7, sl1, P to last st, sl1

Row 27: K2, K2tog, yo, K3, ssk, K3, RT, K3, yo, K2tog, K4, RT, K1, K2tog, K3, yo, ssk, K2 – 33 sts

Row 28: S11, P9, sl1, P4, sl1, P5, sl1, P to last st, sl1

Row 29: K1, K2tog, yo, K4, ssk, K1, RT, K4, RT, K1, yo, ssk, K3, K2tog, K4, yo, ssk, K1 – 31 sts

Row 30: S11, P10, sl1, P3, sl1, P5, sl1, P to last st, sl1

Row 31: K2tog, yo, K5, ssk, K6, LT, K3, LT, K2tog, K5, yo, ssk – 29 sts

Row 32: S11, P12, sl1, P to last st, sl1





Row 33: K3, K2tog, yo, K2, ssk, K3, RT, K1, LT, K3, K2tog, K2, yo, ssk, K3 – 27 sts

Row 34: S11, P10, sl1, P3, sl1, P to last st, sl1

Row 35: K2, K2tog, yo, K3, ssk, K1, RT, K3, LT, K1, K2tog, K3, yo, ssk, K2 – 25 sts

Row 36: S11, P8, sl1, [P2, sl1] twice, P to last st, sl1

Row 37: K1, K2tog, yo, K4, ssk, K7, K2tog, K4, yo, ssk, K1 – 23 sts

Row 38: S11, P10, sl1, P to last st, sl1

Row 39: K2tog, yo, K5, ssk, K5, K2tog, K5, yo, ssk – 21 sts

Row 40: S11, P9, sl1, P to last st, sl1

Row 41: K3, K2tog, yo, K2, ssk, K3, K2tog, K2, yo, ssk, K3 – 19 sts

Row 42: S11, P8, sl1, P to last st, sl1

Row 43: K2, K2tog, yo, K3, ssk, K1, K2tog, K3, yo, ssk, K2 – 17 sts

Row 44: S11, P7, sl1, P to last st, sl1

Row 45: K1, K2tog, yo, K4, sl2tog, K1, pssso, K4, yo, ssk, K1 – 15 sts

Row 46: S11, P6, sl1, P to last st, sl1

Row 47: K2tog, yo, K4, sl2tog, K1, pssso, K4, yo, ssk – 13 sts

Row 48: S11, P5, sl1, P to last st, sl1

Row 49: K3, K2tog, yo, sl2tog, K1, pssso, yo, ssk, K3 – 11 sts

Row 50: S11, P4, sl1, P to last st, sl1

Row 51: K2, K2tog, yo, sl2tog, K1, pssso, yo, ssk, K2 – 9 sts

Row 52: S11, P3, sl1, P to last st, sl1

Row 53: K1, K2tog, yo, sl2tog, K1, pssso, yo, ssk, K1 – 7 sts

Row 54: S11, P2, sl1, P to last st, sl1

Row 55: K2tog, yo, sl2tog, K1, pssso, yo, ssk – 5 sts

Row 56: S11, [P1, sl1] twice

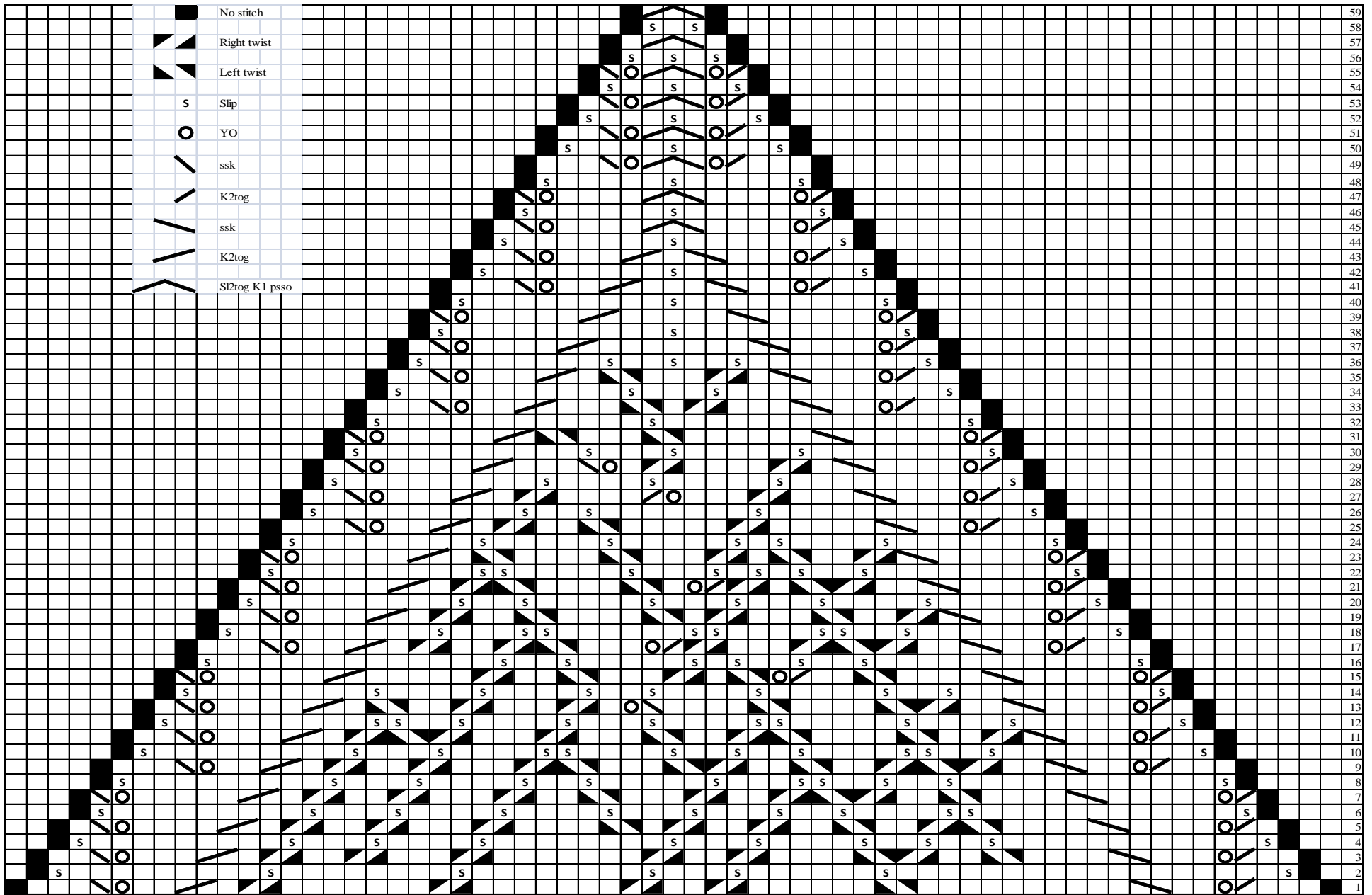
Row 57: K1, sl2tog, K1, pssso, K1 – 3 sts

Row 58: S11, P1, sl1

Row 59: Sl2tog, K1, pssso – 1 st

Finishing

Cut tail and pull through remaining st; run in ends and wet block.





Bracelet Directions

Cast on 11 sts

Section One

Setup Row: sl1, P9, sl1

Row1: [K1, K2tog, yo] three times, K2

Row 2 and all even rows: S11, P9, sl1

Row 3: K2, [yo, ssk, K1] three times

Repeat these four rows 0 [1, 2] times more

Section Two

Row 1: K2, LT, [RT] twice, K3

Row 2: S11, P3, sl1, P1, sl2, P2, sl1

Row 3: K3, LT, RT, K4

Row 4: S11, P4, sl2, P3,sl1

Row 5: K2, RT, LT, K5

Row 6: S11, P4, sl1, P2,sl1, P1, sl1

Row 7: K1, RT, K2tog, yo, LT, K4

Row 8: S11, P3, [sl1, P2] twice, sl1

Row 9: K6, LT, K3

Row 10: S11, P2, sl1, P6, sl1

Row 11: K2, RT, K3, LT, K2

Row 12: S11, P1, sl1, P5, sl1, P1, sl1

Row 13: K1, RT, K2, yo, ssk, K4

Row 14: S11, P3, sl1, P5, sl1

Row 15: K6, LT, K3

Row 16: S11, P2, sl1, P6, sl1

Row 17: K5, RT, LT, K2

Row 18: S11, P1, sl1, P2, sl1, P4, sl1

Row 19: K4, RT, K2, LT, K1

Row 20: S11, P5, sl1, P3, sl1

Row 21: K3, RT, K6

Row 22: S11, P6, sl1, P2, sl1

Row 23: K2, RT, K1, yo, K2tog, K4

Row 24: S11, [P3, sl1] twice, P1, sl1

Row 25: K1, RT, K8

Row 26: S11, P to last st, sl1

Row 27: K3, LT, K6

Row 28: S11, P5, sl1, P3, sl1

Row 29: K4, LT, K2, RT, K1

Row 30: S11, P1,sl1, P2, sl1, P4, sl1

Row 31: K5, LT, RT, K2

Row 32: S11, P2, sl2, P5, sl1

Row 33: K2, ssk, yo, K2, LT, K3

Row 34: S11, P2, sl1, P4, sl1, P1, sl1

Row 35: K5, RT, LT, K2

Row 36: S11, P1, S11, P2, sl1, P4, sl1

Row 37: K4, RT, K2, LT, K1

Row 38: S11, P5, sl1, P3, sl1

Row 39: K3, RT, K6

Row 40: S11, P6, sl1, P2, sl1

Row 41: K2, RT, K7

Cast off knitwise.

